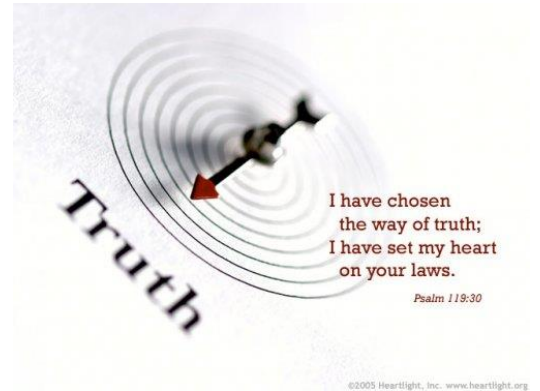


Psalm 119 & the Hebrew Aleph Bet - Part 4

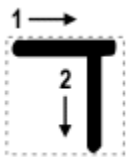


The fourth letter of the Hebrew alphabet is called "Dalet". It is pronounced "d" as in "door". In modern Hebrew, the letter Dalet can appear in three forms:



Write the manual print version (or "block" version) of Dalet as follows:

MANUAL PRINT VERSION



Note that the first line extends past the vertical line to the right.

Writing the Letter: *Dalet*

	<p><i>Practice making the Dalet here:</i></p>
--	---

The *Aleph* represents *Yahweh*. The *Bet* signifies *Yahshua*, Who Tabernacled in the Flesh. The *Gimel* signifies the Spirit of *Yahweh*, manifested or "wrapped up" in John the Baptist, the forerunner of Messiah. And the *Dalet* is the door.



Dalet Signifies the Door of the Sanctuary – and our Choice to Enter:

The letter Dalet is the fourth letter of the Aleph-Bet, having the numeric value of four. The pictograph for Dalet looks something like a closed (hanging) tent door (covered with animal skins), whereas the classical Hebrew script (*ketav Ashurit*) is constructed of two lines and a corner point (or overhang) called an "ear." The bent shape of the dalet symbolizes a needy person who is bent over (the word Dalet comes from *דלה* (*dalah*) which means to draw out or impoverish, and the

word *דלות* (*dalut*) means poor or impoverished). Dalet's ear is said to be listening for the *gemilut chasidim* of the approaching Gimmel.

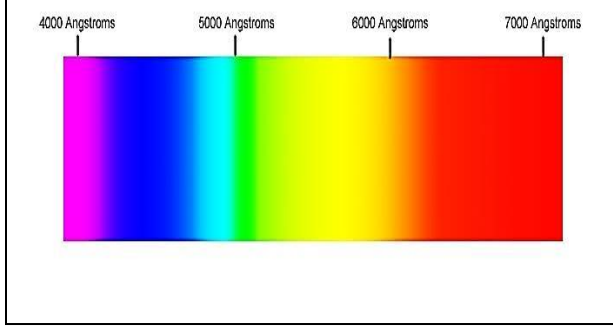
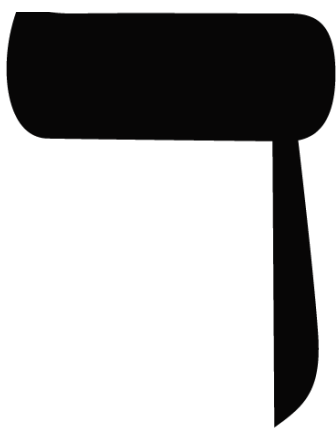
Spiritual Meaning of the *Dalet*

Dalet = 4 and is the D of Hebrew (pronounced *dah-let*)

- *Dalet* is the Hebrew letter for DOOR and the PATH OF LIFE. It shows movement into or out of.
- *Dalet* is the number of EARTH, representing the 4 “corners” (or compass points) of the Earth (N, S, E, W).
- *It is the letter associated with the DOOR to Eternal Life.*

When Adam and Eve sinned, Yahweh used skins to make clothing for them to cover their nakedness (Genesis 3:21). This portrayed how Yahshua would come as the Sacrificial Lamb of God, Who would cover our sins with His Life. By His Sacrifice, He became the DOOR to Eternal Life for man, woman and child.

Four is the number of Earth with its FOUR directions (north, south, east and west). Yahshua came to Earth, after 4,000 years, as the LIGHT of the World to illuminate for us the PATH to Heaven. Surely it can be NO coincidence that visible LIGHT occurs at 4,000 angstroms!



The *Dalet* also suggests the close of probation. For just as the door to the ark wasn't open forever, so the Way to Life through Yahshua will not always be available. Thus, there is urgency in the message of the *Dalet*. ENTER IN while you STILL MAY do so.

Yahshua said, “Truly, truly I say unto you, I AM the DOOR of the sheep,” John 10:7

“I AM the DOOR. By Me, if any man enter in, he shall be saved...” John 10:9.

We were given an unforgettable reminder of the message of *Dalet* at Passover – Here we see what it cost Heaven to provide such a DOOR for lost mankind.



“...I saw four angels standing on the four corners of the earth, holding the four winds of the earth, that the wind should not blow on the earth... And I saw another angel ascending from the east, having the seal of the living God: and he cried with a loud voice to the four angels... Saying, Hurt not the earth... till we have sealed the servants of our God in their foreheads,” Revelation 7:1-3.

The Blood Satisfies the Righteous Demands of God

▪ **Exodus 12:13**
The blood shall be a sign for you, on the houses where you are. And when I see the blood, I will pass over you...

When I See the Blood

The Power of the Blood

Hebrew Words Beginning with *Dalet*:

Hebrew Word	Pronunciation	Meaning
דין האמת	<i>Dayan ha'emet</i>	God is called <i>dayan ha'emet</i> , the True Judge. <i>Yahshua</i> the <i>Mashiach</i> is indeed the True Judge whom the Father has given all authority over the destinies of mankind.
דה	<i>Dat</i>	The word for "religion" is דת (<i>dat</i>), which means the "door of the cross" using the ancient pictographs.
דלה	<i>dala</i>	The word <i>dalet</i> (the name of this letter) is from root (<i>dala</i>), meaning to draw (water) – as from the Wells of Salvation.
<p>Showing the connection between the <i>Dalet</i> and <i>Yahshua</i>, as well as the Wells of Salvation concept, consider the following: דל (<i>dal</i>) = door; דלי (<i>dali</i>) = bucket; דליות (<i>daliyot</i>) = branch or bough (remember <i>Yahshua</i> is titled the Righteous Branch). Because a door in Bible times hinged in the upper corner, it is said that the letter <i>daleth</i> reminds of that. <i>Dalet</i> is also the first letter in <i>dabar</i>, which means "Word". <i>Yahshua</i> is the Word of YAH Who became Flesh. Life is found in accepting the WORD.</p> <p>The <i>Dalet</i> represents lowliness and the consciousness of possessing nothing of one's own. As a door <i>Dalet</i> also symbolically represents mankind's choice to open ourselves to Salvation or to remain closed off and alienated.</p> <p>The corner point represents the concept of <i>bitul</i> or spiritual self-nullification. Practice of <i>bitul</i> leads to humility, the doorway to God's house, which is attained by the technique known as <i>devekut</i>, cleaving or clinging to God:</p> <p style="text-align: center;">דְּבִיקוּת</p>		

The *Dalet* Signifies Spiritual Enlightenment

Traditional Jewish sages identify four levels of interpretation of the Scriptures, called פְּרִדְס (pardes), an acronym formed from:

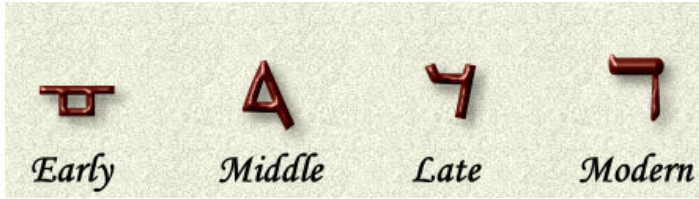
- פְּשָׁט - **P'shat** (literal meaning based on historical intent of author)
- רִמְזוֹ - **Remez** (hint, allusion, analogy, allegory)
- דְּרָשׁ - **D'rash** (application, exposition)
- סוּד - **Sod** (mystery, "deep" meaning)

Indeed the word for **knowledge**, דַּעַת (*da'at*), means the "door on the eye" using the ancient pictographs.

The *Dalet* Meaning in Judah

Yahshua the *Mashiach*, of course, was of the tribe of Judah. Interestingly, the name for the tribe יְהוּדָה (*yehudah*) contains every letter of the Sacred Name יהוה except for the letter *Dalet*, suggesting that the *door* to YHWH would come through Judah.

A Paleo-Hebrew Look at *Dalet*



The Door Hung with Animal Skins – Sanctuary Entrance

The Measurements of the Gate

"And for the gate of the court shall be an hanging of twenty cubits, of blue, and purple and scarlet, and fine

twined linen, wrought with needlework: and their pillars shall be four, and their sockets four." Exodus 27:16

The Gate was the only opening in the Outer Court. It was twenty cubits wide and five cubits high. Those who desire to enter into God's complete and perfect salvation plan must enter the Outer Court by way of the Gate. Yahshua spoke of the Gate in His sermon on the Mount:

Enter ye in at the strait Gate: for wide is the gate, and broad is the way, that leadeth to destruction, and many there be which go in there at, Matthew 7:13

The entry into Yahweh's divine perfection is by the strait gate. The word "strait" means "narrow, close, or confining". The broad way is the way of the world. Those who desire the broad way have no desire to draw nigh unto God. All who will enter into the Kingdom must enter through the close, narrow, strait gate. Yahshua expounded on this basic principle:

Because strait is the Gate, and narrow is the Way, which leadeth unto Life, and few there be that find it, Matthew 7:14.

As *Yahshua* stated, few will find the strait Gate. Many have been told they have found it because they have repeated a few words prompted by another; or they have joined a denominational order. But until a person begins to walk as *Yahshua* walked, he is still on the broad way. The prophet Joel spoke of the multitudes who have entered the strait Gate, but refuse to go on into God:

Multitudes, multitudes in the valley of decision: for the Day of Yahweh is near in the valley of decision, Joel 3:14

The multitude of those who are called by God's Name are still in the valley of decision, not knowing if they want to walk with God or run with the world. *Yahshua* provided us with the Way, the Truth, and the Life. Those who choose His Way will enter into Life. Those who choose the broad way will be part of His judgment.

The Fine Needlework Colors of the Gate: the Color Blue

The Gate was decorated with fine needlework of blue, purple, and scarlet. These three colors reveal important



facets concerning our entry into God's eternal Plan of Salvation. The first color used was blue. Blue is the color which signifies the *Torah* and obedience to it. To help the Children of Israel remember to *shama* (hear, understand, obey and teach) the *Torah*, Yahweh instructed them to wear a blue fringe on their garments.

Speak unto the children of Israel, and bid them that they make them fringes in the borders of their garments throughout their generations, and that they put upon the fringe of the borders a ribband of blue: And it shall be unto you for a fringe, that ye may look upon it, and remember all the Commandments of Yahweh, and do them; and that ye seek not after your own heart and your own eyes, after which ye use to go a whoring: That ye may remember, and do all My Commandments, and be holy unto your God, Numbers 15:38-40.

One of the main reasons people miss the “narrow” Gate to Life (the heart of the Dalet message), is that they reject the meaning of the Blue in the Door. They want Life without personal change. They want cheap Blood. In other words, Christians are tempted to want Yahshua’s Blood to cover them IN their sins, rather than saving them FROM their sins and transitioning them into a Torah-obedient, Grace empowered Life.

The Fine Needlework Colors of the Gate: the Color Purple

Next, the Gate fabric contained purple. Purple is the color of royalty. This color is part of the Sanctuary Door, because it symbolizes Yahweh’s Royal Family. When a sinner is forgiven and cleansed and enters into a NEW LIFE through the DOOR of Yahshua, he or she is entering into the Family of Heaven. Yahweh is his/her Father. He/she bears His Family Name and is called to live a life that honors and glorifies Yahweh’s Holy Name.

And from Yahshua Christ, Who is the faithful Witness, and the first Begotten of the dead, and the Prince of the kings of the earth. Unto Him that loved us, and washed us from our sins in His Own Blood, And hath made us kings and priests unto God and his Father; to Him be glory and dominion for ever and ever. Amen, Revelation 1:5-6.

Thou shalt not take the name of Yahweh thy God in vain; for Yahweh will not hold him guiltless that taketh his name in vain, Exodus 20:7.

The Fine Needlework Colors of the Gate: the Color Scarlet

Scarlet is the color of the Blood Sacrifice. Only by the sacrificial Blood of Yahshua can we enter into the presence of the King of kings. It is the Passover Door – the Blood on the Doorposts not only protects those who enter from the Death Angel, but also cleanses us from defilement and atones for our sins that we have the right to LIFE, in Christ.

The Curtains of Fine Twined Linen: Linen, the Symbol of Righteousness

The curtains that enclose the Outer Court were made of fine twined linen. Linen is the symbol of righteousness. Our whole life must be surrounded by the Righteousness of God. In his letter to the Corinthians, Paul revealed:

For He hath made Him to be sin for us, Who knew no sin; that we might be made the righteousness of God in Him, 2 Corinthians 5:21

Because of the price Yahshua paid we, too, can attain unto the righteousness of God. Yahshua revealed His Holy City, the bride of Christ, to John on the Isle of Patmos:

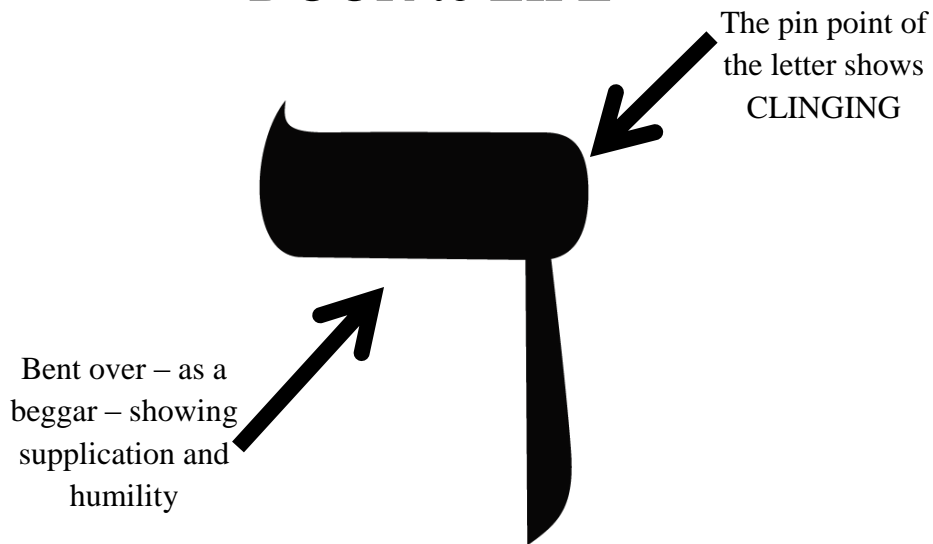
Let us be glad and rejoice, and give honour to Him: for the marriage of the Lamb is come, and His wife hath made herself ready. And to her was granted that she should be arrayed in fine linen, clean and white: for the fine linen is the righteousness of saints, Revelation 19:7-8.

Psalm 119:25-32 Shows the DALET

In Psalm 119:25-32, we find the DALET section. In this part of Psalm 119, we see what it takes to enter the DOOR of Salvation, receiving Eternal Life from Yahweh. It also portrays the humble, beggar-ish attitude we are to have in seeking to enter this DOOR:

	ד	4 DALED
	דְּבַקָה לְעָפָר נַפְשִׁי חַיִּי כְּדָבָרְךָ:	25 My soul is laid low in the dust. Revive me according to your word!
	DABAR דְּרָכֵי טַפְרֹתַי וַתַּעֲנֵנִי לְמַדְנֵי חֻקֶיךָ:	26 I declared my ways, and you answered me. Teach me your statutes.
	CHOQ דְּרֹשׁ פִּקּוּדֶיךָ הַבִּינֵנִי וְאַשִׁיחָה בְּנִפְלְאוֹתֶיךָ:	27 Let me understand the teaching of your precepts! Then I will meditate on your wondrous works.
	PIQQUWD דְּלִפָּה נַפְשִׁי מִתּוֹנָה קִיַּמְנֵי כְּדָבָרְךָ:	28 My soul is weary with sorrow: strengthen me according to your word.
	DABAR דְּרֹשׁ שְׂקָר הַסֵּר מִמֶּנִּי וְתוֹרַתְךָ חַנּוּנִי:	29 Keep me from the way of deceit. Grant me your law graciously!
	TORAH דְּרֹאמוֹנָה בְּחַרְתִּי מִשְׁפָּטֶיךָ שׂוֹיְתִי:	30 I have chosen the way of truth. I have set your ordinances before me.
	MISHPAT דְּבַקְתִּי בְּעֲדוּתֶיךָ יְהוָה אֱלֹהֵי שֹׁנָי:	31 I cling to your statutes , Yahweh. Don't let me be disappointed.
	YHWH EDUWTH דְּרֹמְצוֹתֶיךָ אֲרוּץ כִּי תַרְחִיב לִבִּי:	32 I run in the path of your commandments , for you have set my heart free.
	MITSVAH	

DOOR to LIFE



Keyword Study: Psalm 119:25-26 (words starting with *dalet* are highlighted)

“DALETH. My soul **cleaveth** unto the **dust**: **quicken** thou me according to **Thy Word**. I have **declared** **my ways**, and Thou **heardest** me: **teach** me **Thy Statutes**.”

Keyword	Strong's #	Hebrew Word	Meaning
Cleaveth			
Dust			
Quicken			
Thy Word			
Declared			
My Ways			
Heardest			
Teach			
Thy Statutes			

Rewrite these 2 verses using the fuller meaning you found in your Keyword study above:

Keyword Study: Psalm 119:27-28 (words starting with *dalet* are highlighted)

“Make me to understand the Way of Thy Precepts: so shall I talk of Thy wondrous Works. My soul melteth for heaviness: strengthen Thou me according unto Thy Word.”

Keyword	Strong's #	Hebrew Word	Meaning
Understand			
Way			
Thy Precepts			
Talk			
Wondrous Works			
Melteth			
Heaviness			
Strengthen			
Thy Word			

Rewrite these 2 verses using the fuller meaning you found in your Keyword study above:

Keyword Study: Psalm 119:29-30 (words starting with *dalet* are highlighted)

“**Remove** from me **the way** of **lying**; and grant me **Thy Law** **graciously**. **I have chosen** **the Way** of **Truth**: **Thy Judgments** have **I laid** before me.”

Keyword	Strong's #	Hebrew Word	Meaning
Remove			
The Way			
Lying			
Thy Law			
Graciously			
I have chosen			
Truth			
Thy Judgments			
I laid			

Rewrite these 2 verses using the fuller meaning you found in your Keyword study above:

Keyword Study: Psalm 119:31-32 (words starting with *dalet* are highlighted)

“**I have stuck** unto **Thy Testimonies**: O LORD, **put me not to shame**. I will **run the Way** of **Thy Commandments**, when Thou **shalt enlarge my heart**.”

Keyword	Strong's #	Hebrew Word	Meaning
I have Stuck			
Thy Testimonies			
Put me not to Shame			
Run			
The Way			
Thy Commandments			
Shalt Enlarge			
My Heart			

Rewrite these 2 verses using the fuller meaning you found in your Keyword study above:

Psalm 119:17-24 Reveals the *Dalet* Message:

(write your own personal “Bible Commentary” Message about these verses, now that you’ve studied them. Include Cross-reference Scriptures.)

Personal Application:

1. What was the most personally meaningful message of the *Dalet* that you found in this study?

2. What insights about *Yahweh* did you gain?